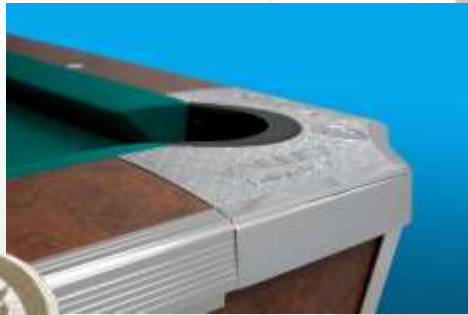
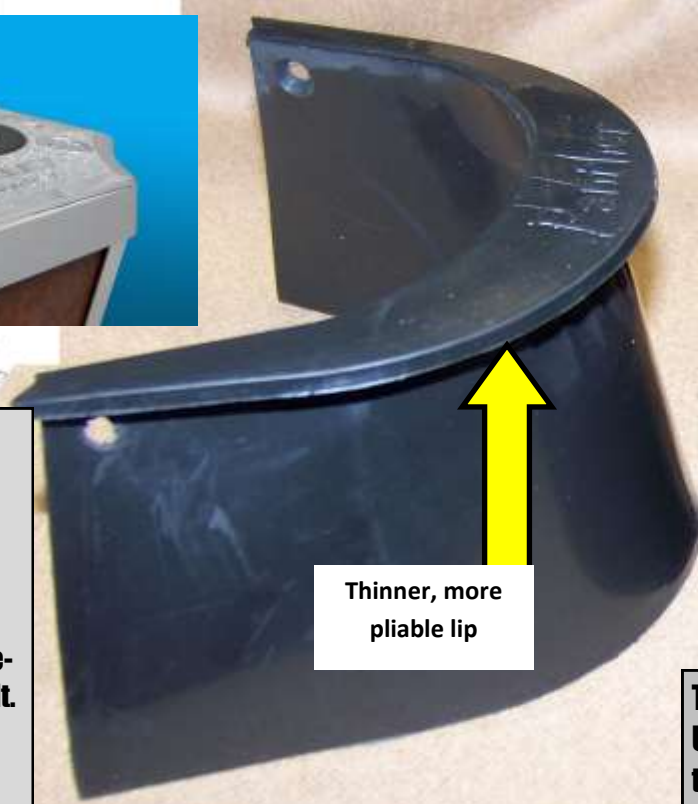


VALLEY Talks about Pocket Liners



"My table is a **PANTHER** it has these logos in the corners!!"

NO! Your table might be a **COUGAR** That exact logo was used by Valley for 30 years before the first Panther was built. **All Panthers are cats, but not all cats are Panthers.**



Thinner, more pliable lip



May have this hole punched.
The only difference between Punched and unpunched.

The PANTHER pocket liner—The lip says PANTHER
Used on Panther, Pro Cat and Top Cat tables 2009-present, characterized by their flush fit in countersunk corner castings. These pocket liners ARE NOT going to fit older tables.

The CLASSIC pocket liner—The lip says VALLEY
Used on Valley tables 'roughly 1970' to 2009, and on Valley non-coin tables until 2020. The lip of these pocket liners overlaps the corner casting. Not used on new-table production since 2020
These pocket liners ARE NOT going to fit on Panther tables.
Castings before 1992 not tapped for allen screws use **UNPUNCHED** liners. Castings 1992-present were tapped and use **PUNCHED** liners

We get this a lot: "There are so many options, I don't want to order the wrong one" - It's easier than you think

- **CORNERS vs CENTERS:** Each table has 4 corner and 2 center pockets. That's why we have corners and centers listed.
- **UNPUNCHED** liners : older tables where the pockets were attached with little nails (we stopped using nails over 30 years ago, and stopped stocking them 10 years ago)
- **PUNCHED** liners : newer non-Panther Valley tables (or older tables with new castings) where the pockets attached with allen screws or plastic plugs.
- **PUNCHED vs. UNPUNCHED ?** Not sure? Order unpunched and punch your own holes if you need them (*TRUE STORY : do NOT be the guy who said "You sent me unpunched liners and I ordered punched, and my guys won't punch any holes"*)
- **PANTHER** liners : tables 2009-present only where the existing liners say "Panther" on the lip.

VALLEY Talks about Pocket Liners

**The CLASSIC pocket liner—The lip says VALLEY
Are these going to fit my old table?**

- The mold from which we get the pocket hasn't changed since 1991**
- The tool that made the corner casting was unchanged from 1979 to when it could no longer be used in the mid-2000s**
- The tool that makes the angled corner castings hasn't changed. Ever.**

Thousands of pocket liners are shipped every year to hundreds of Valley table owners with no fit problems at all; but every so often, a customer will contact us that these otherwise-trouble-free pockets do not fit on their table.

In nearly every case, *something on that table changed from how it left our factory.*

We get this a lot: **"There are so many options, I don't want to order the wrong one"** - It's easier than you think

- CORNERS vs CENTERS:** Each table has 4 corner and 2 center pockets. That's why we have corners and centers listed.
- UNPUNCHED liners :** older tables where the pockets were attached with little nails (we stopped using nails over 30 years ago, and stopped stocking them 10 years ago)
- PUNCHED liners :** newer non-Panther Valley tables (or older tables with new castings) where the pockets were attached with allen screws or plastic plugs.
- PUNCHED vs. UNPUNCHED ?** Not sure? Order unpunched and punch your own holes if you need them
- PANTHER liners :** tables 2009-present only where the existing liners say "Panther" on the lip.